

*Ribera del Duero*  
DENOMINACIÓN DE ORIGEN

# BODEGA Y VIÑEDOS F. CALLEJO

## SOTILLO DE LA RIBERA

Avenida del Cid, km 16 · 09441 Sotillo de la Ribera · Burgos · Spain  
tel: +34 947 532 312 · callejo@bodegasfelixcallejo.com · bodegasfelixcallejo.com



# **We are a Family Winery,**

founded in 1989 by Félix Callejo. We are currently the second generation, Cristina, José Félix, Beatriz and Noelia Callejo who continue this exciting legacy.





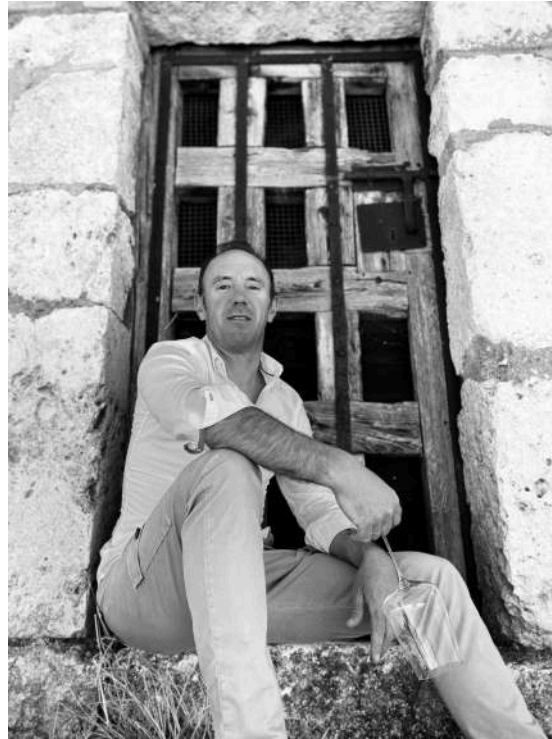
**BODEGA Y VIÑEDOS F. CALLEJO**  
SOTILLO DE LA RIBERA



· Beatriz ·



· Noelia ·



· José Félix ·



· Cristina ·

*\* Winemakers of the year 2021 by Tim Akin MW.*

BODEGA Y VIÑEDOS F. CALLEJO  
SOTILLO DE LA RIBERA



The experiences in other wineries of both José Félix (Petrus - France, 1999; Torres - Chile, 2000) and Noelia (Araujo - Napa, 2007 and 2010; Cobos - Mendoza, 2008) have provided the basis for further developing a philosophy dump on the soil and to become *Vignerons*.

In the year 2000, we began to work under *organic management* in our vineyards, a clean, respectful viticulture, full of life for the soils and therefore for our wines.

This step, *made us and makes us return to the past to be able to look to the future*. Observe our surroundings, the landscape that surrounds us, the culture that we have acquired thanks to our ancestors always linked to the world of wine and the authenticity of our land.





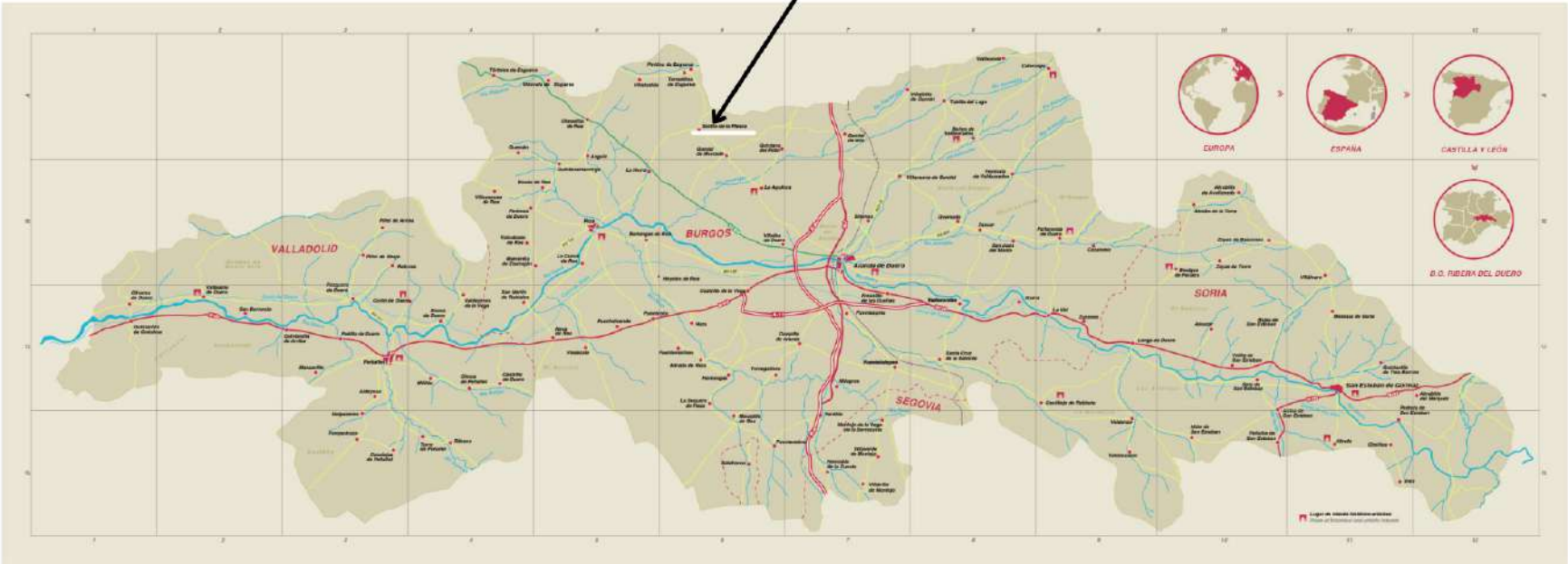
# Our landscape,

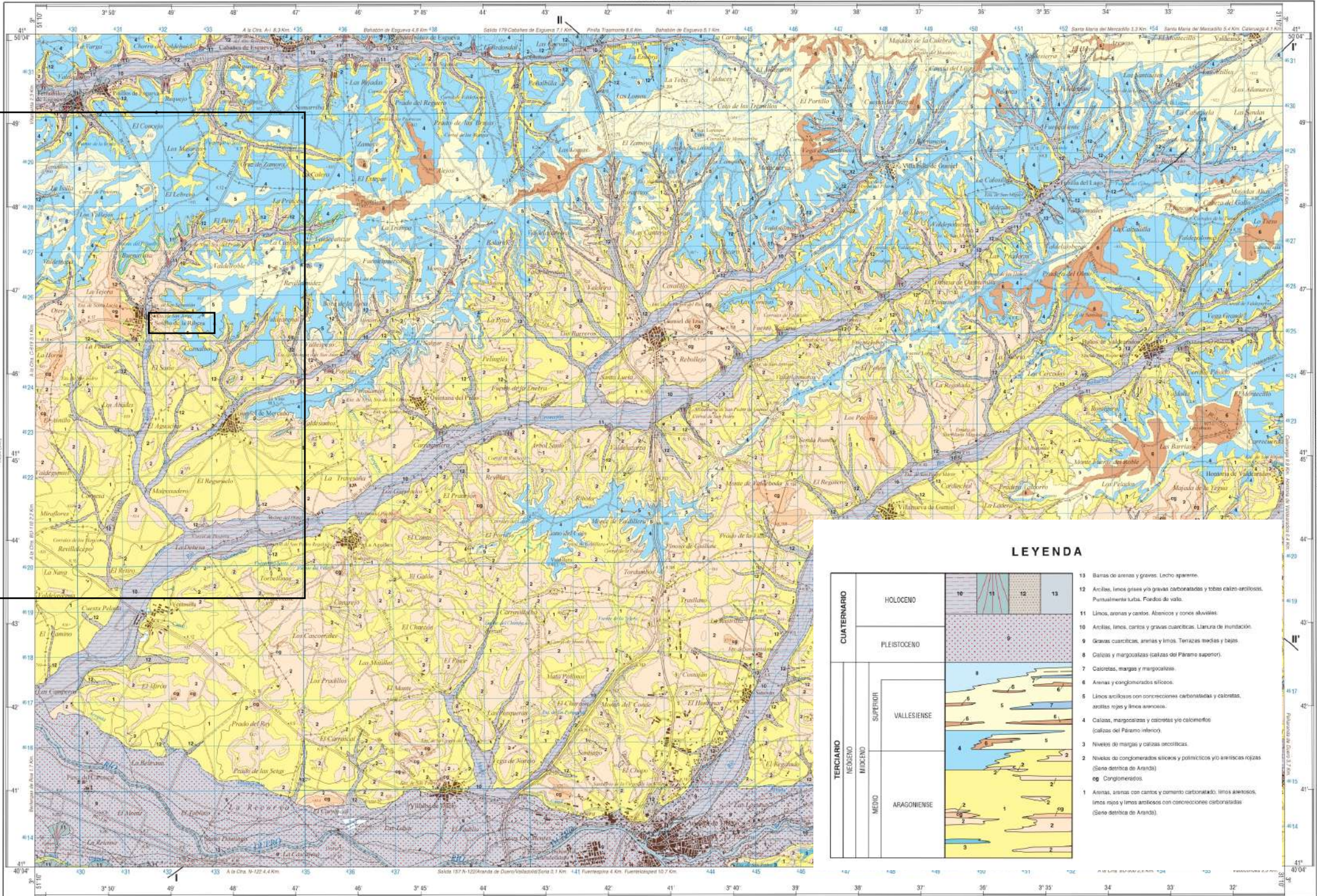
It is located in the small village of *Sotillo de la Ribera*, on the northern edge of the Duero river basin, in a privileged environment, due to its high altitude (830 - 930 m), where the highland of the highest areas, of limestone soils , they give way as we follow the erosion of the valley, to gravel soils (old river beds), sand in the pine area, and clays in the lower areas.



**· SOTILLO DE LA RIBERA ·**

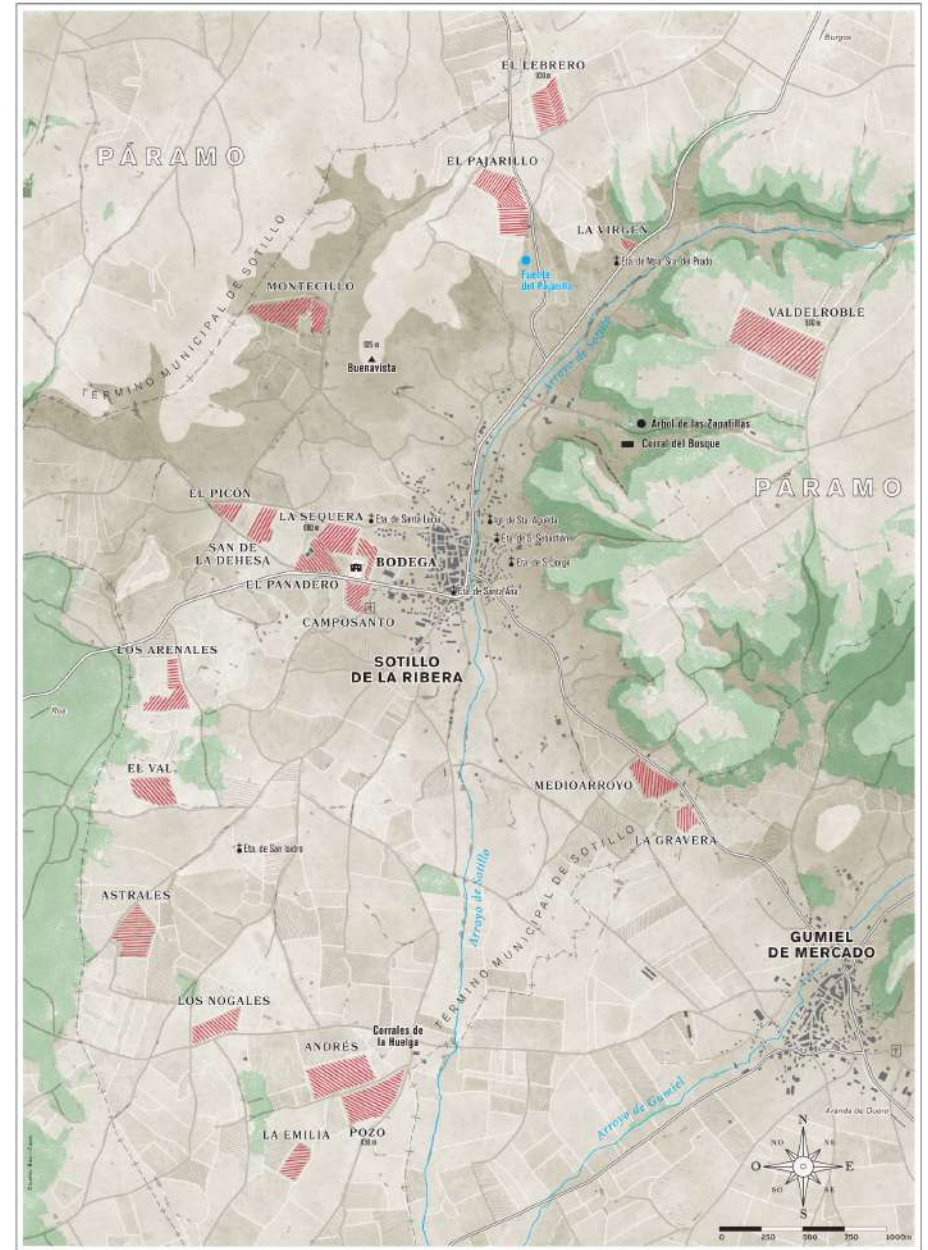
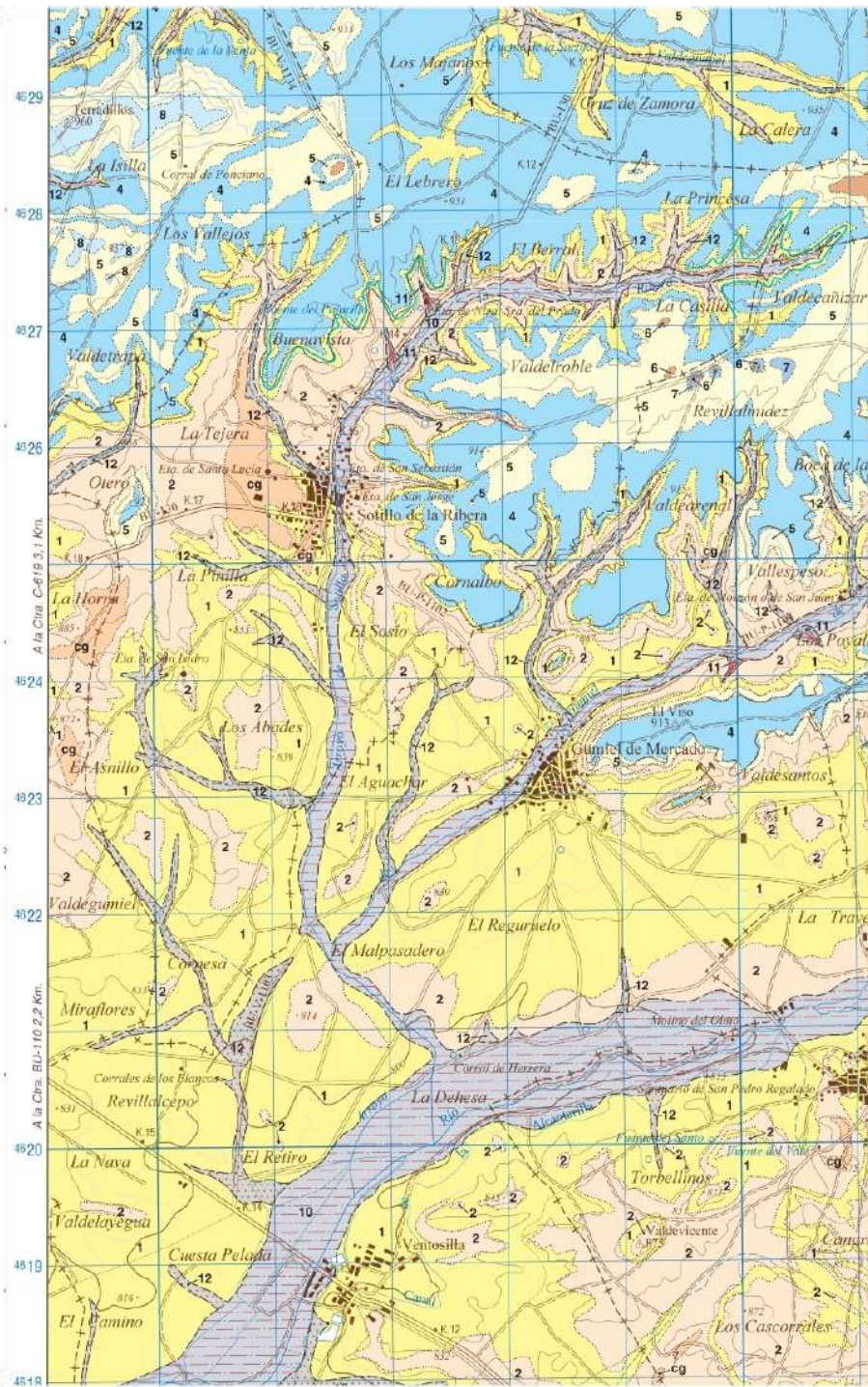
930 m.





**LEYENDA**

CUATERNARIO	HOLOCENO	13	Barras de arenas y gravas. Lecho aparense.
		12	Arcillas, limos grues y/o gravas carbonatadas y tobas calizo-arcillosas. Puntualmente turba. Fondos de valle.
	PLEISTOCENO	11	Limos, arenas y cantos. Albarcos y conch. aluviales.
		10	Arcillas, limos, cantos y gravas cuarcitas. Litadura de inundación.
TERCIARIO	SUPERIOR	9	Gravas cuarcitas, arenas y limos. Terrazas medias y bajas.
		8	Calizas y margositas (calizas del Páramo superior).
		7	Calcretas, margas y margositas.
		6	Arenas y conglomerados silíceos.
	MIDIO	5	Limos arcillosos con concreciones carbonatadas y calcretas, arcillas rojas y limos arenosos.
		4	Calizas, margositas y calcretas y/o calomorfos (calizas del Páramo inferior).
		3	Niveles de margas y calizas arcillosas.
		2	Niveles de conglomerados silíceos y polimictos y/o areniscas rojas (Seno dentro de Aranda).
MEDIO	ARAGONIENSE	1	Arenas, arenas con cantos y cemento carbonatado, limos arenosos, limos rojos y limos arcillosos con concreciones carbonatadas (Seno dentro de Aranda).
		0	Conglomerados.



MAPA DE LOS VIÑEDOS DE LA BODEGA F. CALLEJO EN EL MUNICIPIO DE SOTILLO DE LA RIBERA

BODEGA Y VIÑEDOS F. CALLEJO  
SOTILLO DE LA RIBERA

Our vineyard is formed by  
**27 plots** distributed along the  
*Sotillo de la Ribera* profile and  
located in different places  
forming **54,8 Ha** in total.

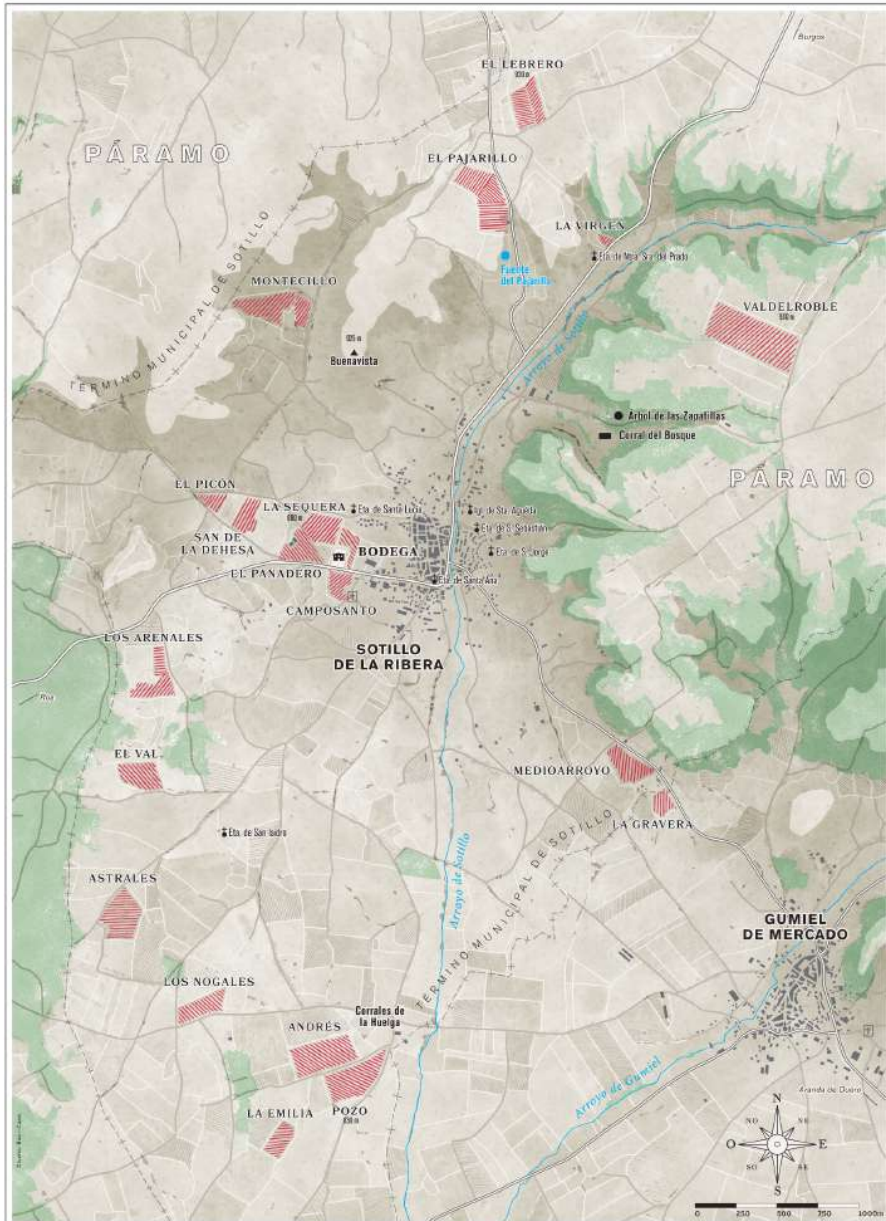




The handling in the winery accompanies the respect in the vineyard, with the manual harvest, double sorting table and work by gravity that allows to maintain the essence achieved in the vineyard.

**THIS EVOLUTION TOWARDS A  
DEEPER UNDERSTANDING OF OUR  
ENVIRONMENT IS THE ONE THAT  
PUSHES US TO EXPRESS IT IN OUR  
WINES, EACH ONE WITH OWN  
IDENTITY, MARKED BY ITS ORIGIN OF  
DIFFERENT SOILS.**

*CRISTINA, JOSÉ FÉLIX, BEATRIZ and NOELIA*



MAPA DE LOS VIÑEDOS DE LA BODEGA F. CALLEJO EN EL MUNICIPIO DE SOTILLO DE LA RIBERA

BODEGA Y VIÑEDOS F. CALLEJO  
SOTILLO DE LA RIBERA

North of Sotillo, páramo soils.  
920 M.

**VINO FINO DE GUARDA:**

**PARAJE CALIZO**  
Viña Mediorroyo & Montecillo



**VINO FINO DE GUARDA:**

**PARAJE ARENOSO CALCÁREO**  
Viña Los Arenales & Camposanto



**SINGLE VINEYARD WINE:**

Viña Valdelroble. Páramo calizo. 930 m.



**VILLAGE WINE:**

Mosaic of vineyards in the moorland area of Sotillo, with limestone soils. Tinto Fino, Garnacha and Albillo Mayor

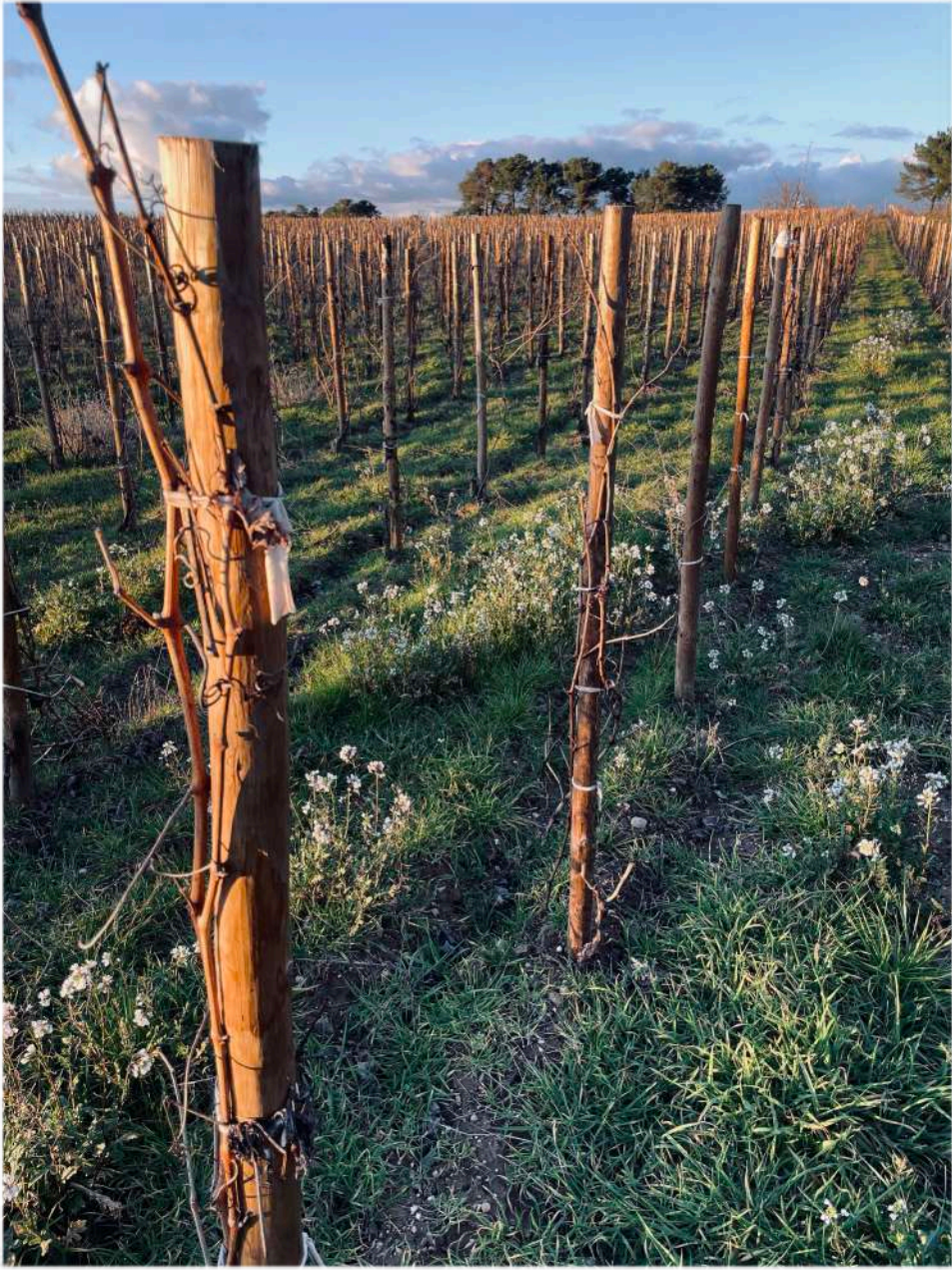


**REGIONAL WINE:**

Vineyards located in the southern area. Sedimentary soils. Clays.



South of Sotillo, regional soils.  
830 M.





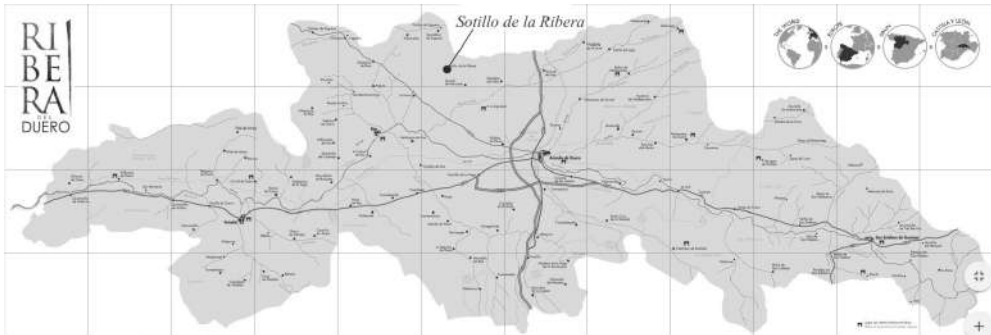


*We introduce you:*

# GRAN CALLEJO

“For the elaboration of a "Great" a lot of patience is required. We select those loose soils, where sands predominate, at altitudes that allow maintaining a balanced, elegant Tinto Fino, that lasts and evolves in this long aging of 2 years in French oak and more than 3 years in bottle. Always faithful to our style of preserving the essence that we find in the vineyard, it is in this “gran” where we see the potential of our vineyards in Sotillo and how time so finely shapes the Tinto Fino.”

José Félix y Noelia Callejo  
Winemakers



Our landscape is located in the village of **Sotillo de la Ribera**, province of Burgos, on the northern edge of the Duero river basin, in a privileged environment, due to its high **altitude (830 - 930 m)**, where the moors (*páramo*) of the highest areas, with limestone soils, give way as we follow the erosion of the valley, to gravel soils (old river beds), sandy areas in the pine area, and clays in the lower areas .

José Félix y Noelia Callejo  
Winemakers

## terroir

### VINEYARDS

- **Tinto Fino** from our vineyards:

*Camposanto y Bodega (parte pinos)*

- Tipe of soil: *Franco-sandy*.
- Altitude: *880-900 m*.
- Yield: *1,8 kg/vine*.

- Manual picking in boxes of 12 kg capacity; with two sorting tables; Gravity system.
- Natural yeast.
- Aging in barrique for 24 months and 36 months in bottle.
- # Bottles: 1.552
- # Magnum: 60.
- # Double Magnum: 20.



## Vintage 2019

### INFORMATION

This harvest is characterized by being of high quality and very typical in Ribera del Duero. Although low rainfall (only 365 l / m2 were recorded during the year), well distributed in winter, spring and the month of June. Winter temperatures were not too cold, which favored a somewhat earlier bud break than usual, towards the end of April. The month of June was hot but on the contrary the summer there were no days of temperatures as high as the harvest '18, which favored a complete maturation. We arrived in September with the advanced cycle, the harvest started at the end of September and the beginning of October. Excellent grape quality, small clusters and great sugar / acid balance.



## press SCORES

93 points Tim Atkin MW. Vintage 2019  
98 points Guía Gourmets. Vintage 2018  
92 points James Suckling. Vintage 2018  
97 points Guía Gourmets. Vintage 2016  
92 points Tim Atkin MW. Vintage 2016  
92 points James Suckling. Vintage 2016  
98 points Guía Gourmets. Vintage 2015  
94 points Guía Peñín. Vintage 2015  
93 points James Suckling. Vintage 2015  
98 points Guía Gourmets. Vintage 2014  
93 points Guía Peñín. Vintage 2014

96 points Guía Gourmets. Vintage 2013  
97 points Guía Gourmets. Vintage 2012  
94 points Tim Atkin MW. Vintage 2012  
98 points Guía Gourmets. Vintage 2011  
93 points James Suckling. Vintage 2011  
92 points Guía Peñín. Vintage 2011  
91 points Robert Parker. Vintage 2011  
97 points Guía Gourmets. Vintage 2010  
93 points Falstaff. Vintage 2010

*Ribera del Duero*  
DENOMINACIÓN DE ORIGEN

José Félix Callejo  
jf.callejo@bodegasfelixcallejo.com  
*Winemaker*

Cristina Callejo  
cristina.callejo@bodegasfelixcallejo.com  
*Export Manager*

**BODEGA Y VIÑEDOS**  
**F. CALLEJO**  
SOTILLO DE LA RIBERA

Noelia Callejo  
noelia.callejo@bodegasfelixcallejo.com  
*Winemaker*

Beatriz Callejo  
beatriz.callejo@bodegasfelixcallejo.com  
*National Market*

Avenida del Cid, km 16 · 09441 Sotillo de la Ribera · Burgos · Spain  
tel: +34 947 532 312 · callejo@bodegasfelixcallejo.com · bodegasfelixcallejo.com

